



Total Solution Provider in Saw Device

SA434BK

Remote Control, RF SAW Filter
Revision 0: September 2005



- Electrical Characteristics
 - Package Dimensions
 - Testing Environment
 - Frequency Characteristics
-

SAWNICS Inc.

460 Cheonheung-ri, Seonggeo-eup, Cheonan-si, Chungcheongnam-do, 330-836 / Korea.
Tel: +82 41 550 9372 / Fax: +82 41 550 9399 / www.sawnics.com

□ Electrical Characteristics

Maximum Ratings

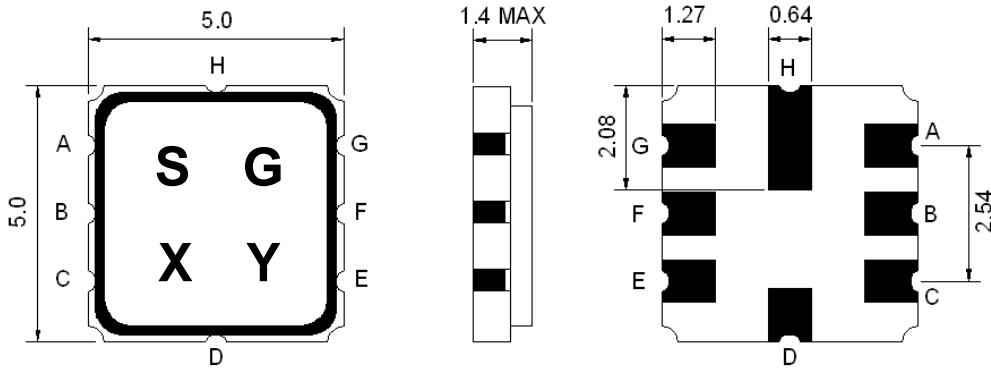
Parameters Description	Unit	Minimum	Typical	Maximum
Operating Temperature Range	°C	-40	-	+85
Storage Temperature Range	°C	-40	-	+85
Maximum DC Voltage	V	-	-	10
Maximum Input Power	dBm	-	-	10
Source Impedance (single ended) ⁽¹⁾	Ω	-	50	-
Load Impedance (single ended) ⁽¹⁾	Ω	-	50	-
Package type & size	K			
Length x Width	mm ²	-	5.0 x 5.0	-
Height	mm	-	-	1.5

Electrical Specification

Parameters Description	Unit	Minimum	Typical	Maximum
Center Frequency (Fo)	MHz	-	434.42	-
Insertion Loss within 434.30 ~ 434.54 MHz	dB	-	2.0	4.5
Pass Band Ripple within 434.30 ~ 434.54 MHz	dB	-	1.0	2.0
Attenuation				
10.0 ~ 415.0 MHz	dB	45	50	-
415.0 ~ 429.0 MHz	dB	40	45	-
429.0 ~ 433.42 MHz	dB	15	20	-
435.42 ~ 443.0 MHz	dB	10	15	-
443.0 ~ 550.0 MHz	dB	35	40	-
550.0 ~ 1000.0 MHz	dB	45	50	-

Notes : (1) With Matching Network .

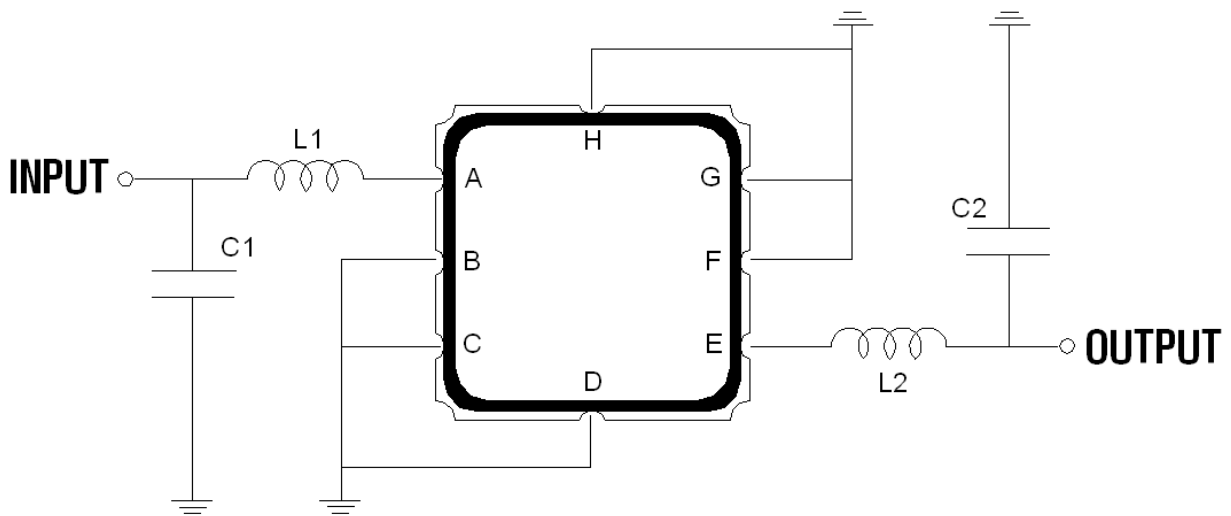
Package Dimensions



Marking Descriptions	
S	TCRF Application
G	Series Number
X	Date Code(Year)
Y	Date Code(Month)

Pin Description	
A, C, D, F, G, H	Ground
B	In
E	Out

Testing Environment



L1=33nH , L2=33nH
 C1=5.6pF , C2=5.6pF

□ Frequency Characteristics

Frequency Response

